

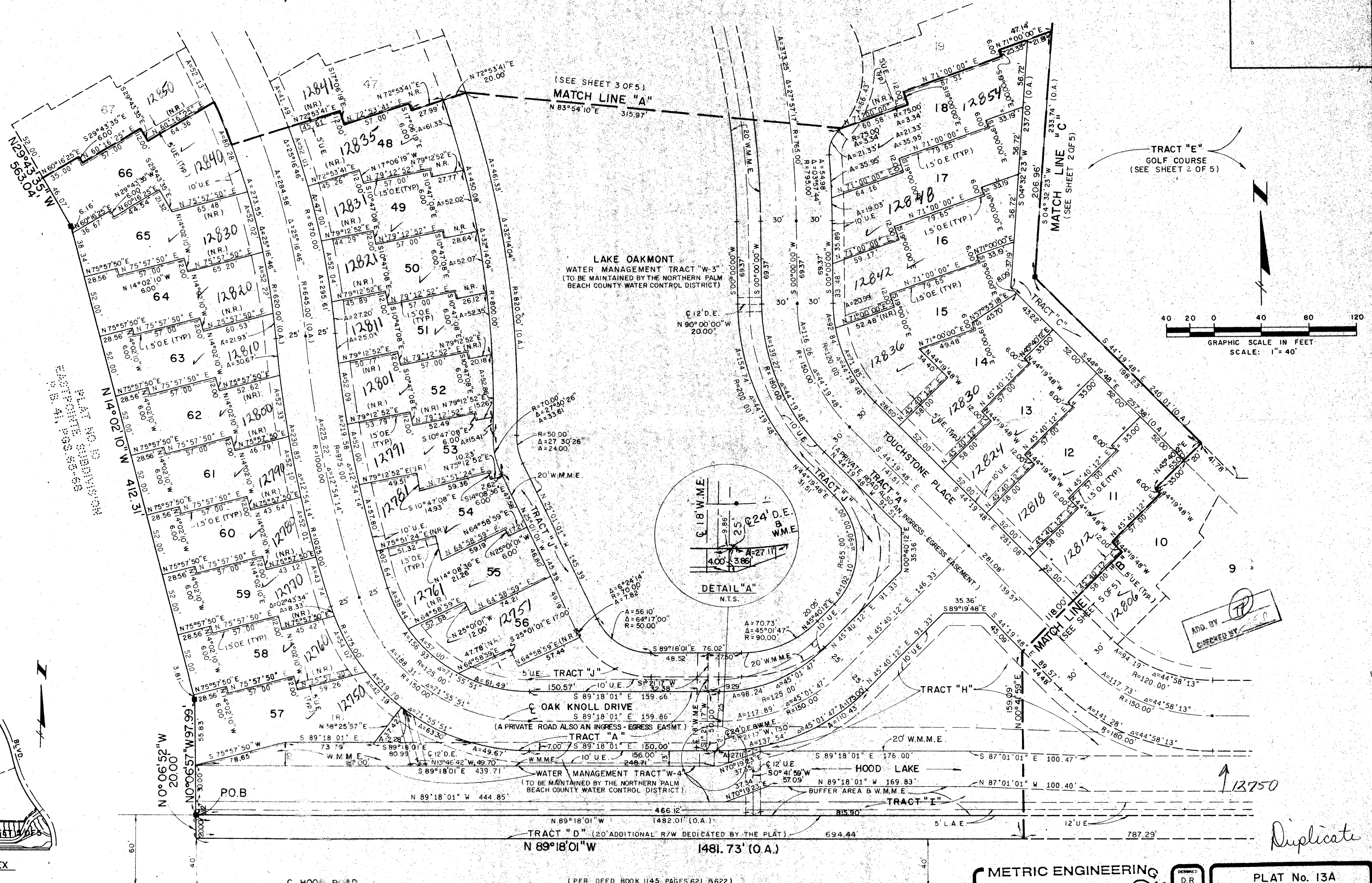
PLAT NO. 13A EASTPOINTE SUBDIVISION (A PLANNED UNIT DEVELOPMENT)

102

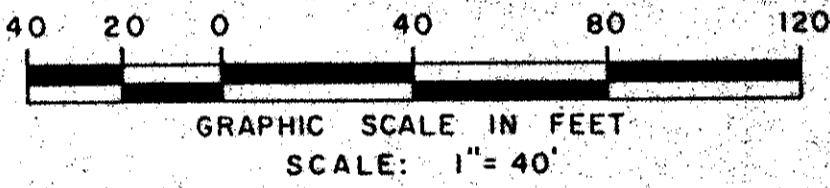
BEING A PLAT OF A PORTION OF SECTIONS 27 AND 34, TOWNSHIP 41 SOUTH,
RANGE 42 EAST, PALM BEACH COUNTY, FLORIDA.

AUGUST, 1988

SHEET 4 OF 5



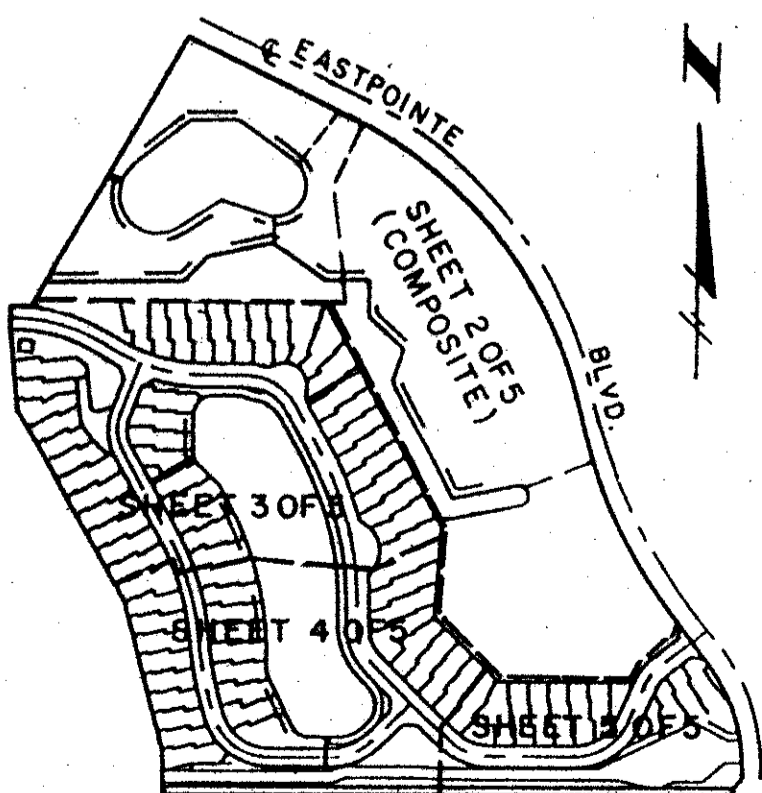
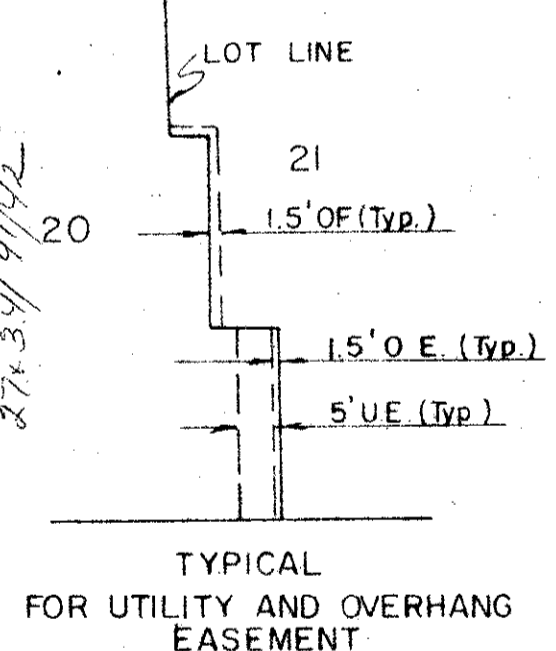
TRACT "E"
GOLF COURSE
(SEE SHEET 2 OF 5)



AND BY
CHECKED BY

Duplicate

61 Eastpointe
27 B
115 B
RE 80-28
3348
TJAZ 797



METRIC ENGINEERING, INC.
ENGINEERS - PLANNERS - SURVEYORS
MIAMI - FORT LAUDERDALE
WEST PALM BEACH - PANAMA CITY

DESIGNED
D.R.
DRAWN
W.M.
CHECKED
M.T.K.

PLAT No. 13A
EASTPOINTE SUBDIVISION
SHEET 4 OF 5

(PER DEED BOOK 1145, PAGES 621, 622)
(PER DEED BOOK 382, PAGES 304, 305)